



FOUNDATION



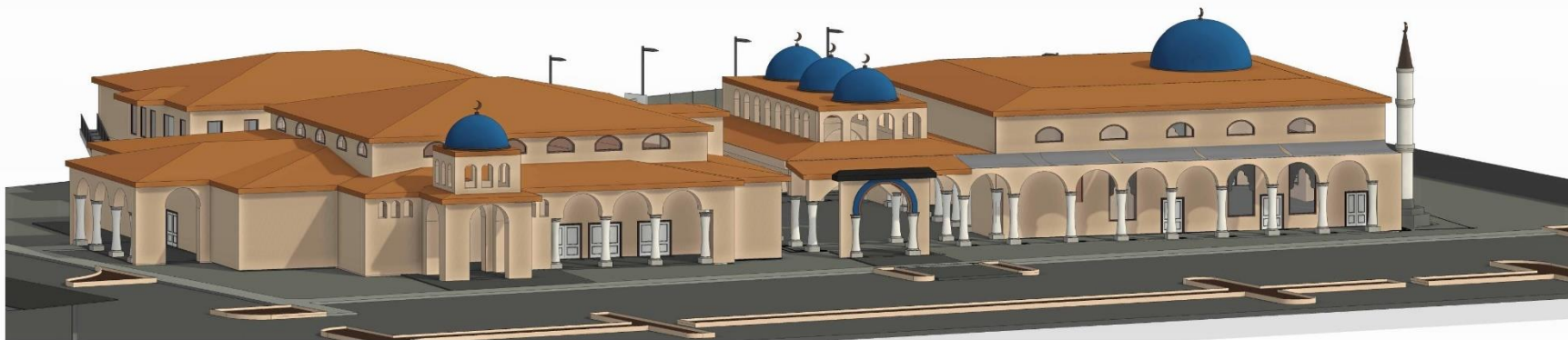
MUSLIM COMMUNITY CENTER  
OF GREATER SAN DIEGO  
UNITED IN FAITH

OPERATIONS

# GSDMCC Foundation & Operations

## Fund Raising

## Debt Free Masjid Expansion



April 07, 2023



FOUNDATION



MUSLIM COMMUNITY CENTER  
OF GREATER SAN DIEGO  
UNITED IN FAITH

# TABLE OF CONTENT

OPERATIONS

- GSDMCC Organization
- Project Justification
- Scope Of Masjid Expansion
- Conceptual Architecture Drawings
- Space Analysis
- Conceptual Architecture Rendering
- ROM Cost
- Conclusion



FOUNDATION

# GSDMCC Organization



MUSLIM COMMUNITY CENTER  
OF GREATER SAN DIEGO  
UNITED IN FAITH

OPERATIONS

## GSDMCC Foundation

- **Responsible for Land Purchase, Asset Management & Capital Improvement**
- **Governed By Foundation By-Laws**
- **One Time Membership Fee \$10,000**

## GSDMCC Operations

- **Responsible for operating the Masjid and various religious, youth and sports program**
- **Responsible for operating the Al Manar School**
- **Consists of 9 BOD, Imam and Administrative Assistant**
- **Governed By Operations By-Laws**
- **Annual Membership Fee \$600**



FOUNDATION

# Justification



MUSLIM COMMUNITY CENTER  
OF GREATER SAN DIEGO  
UNITED IN FAITH

OPERATIONS

- 50% increase in Al Manar School enrollment. Students are being turned away
- Substantial increase in the community population during the past 10 years
- 84 days out of 365 days the Center operates in “Overcapacity Mode” resulting in spillage into veranda, parking lot and outdoor soccer field.
- Substantial increase in religious, sports and youth programs
- Need to generate revenue for financial independence
- Home for Residence Scholar



FOUNDATION



MUSLIM COMMUNITY CENTER  
OF GREATER SAN DIEGO  
UNITED IN FAITH

# Scope of Masjid Expansion

OPERATIONS

- Build a Masjid per the Master Plan
- New Masjid will accommodate future growth
- Add new classroom building for Al Manar School
- Revert existing building to its original plan of a multi-purpose hall
- Covered Courtyard for salat and special events
- Indoor Gym
- Residence for Center Director/Resident Scholar





FOUNDATION

# Conceptual Architectural Drawing



MUSLIM COMMUNITY CENTER  
OF GREATER SAN DIEGO  
UNITED IN FAITH

OPERATIONS

- ◆ Completed needs study and space planning
- ◆ Retained Benton & Benton Architect to do Schematic Design & Architecture Rendering
- ◆ Walked the Site with Architect
- ◆ Obtained Santa Luz Design Standard
- ◆ Reviewed Current Use Permit for GSDMCC
- ◆ Architect Developed Conceptual Drawing



FOUNDATION

# Space Analysis

Total Salat Occupant 2200



MUSLIM COMMUNITY CENTER  
OF GREATER SAN DIEGO  
UNITED IN FAITH

OPERATIONS

STRUCTURE	SPACE	AREA SF	OCCUPANT LOAD
1	MOSQUE	7510	1090
2	COVERED COURTYARD	4100	650
3	WADU/TOILET W/SHOWER	1050	40
3	FITNESS CENTER	900	24
3	FOOD PREP ROOM/COFFEE SHOP	550	12
4	CLASSROOM	3500	270
4	LAB (AI, ETC)	1100	24
4	RESIDENCE	1200	1 Family
EXISTING	MUSALA	3000	460



FOUNDATION

# Floor Plan 1<sup>st</sup> level



MUSLIM COMMUNITY CENTER  
OF GREATER SAN DIEGO  
UNITED IN FAITH

OPERATIONS







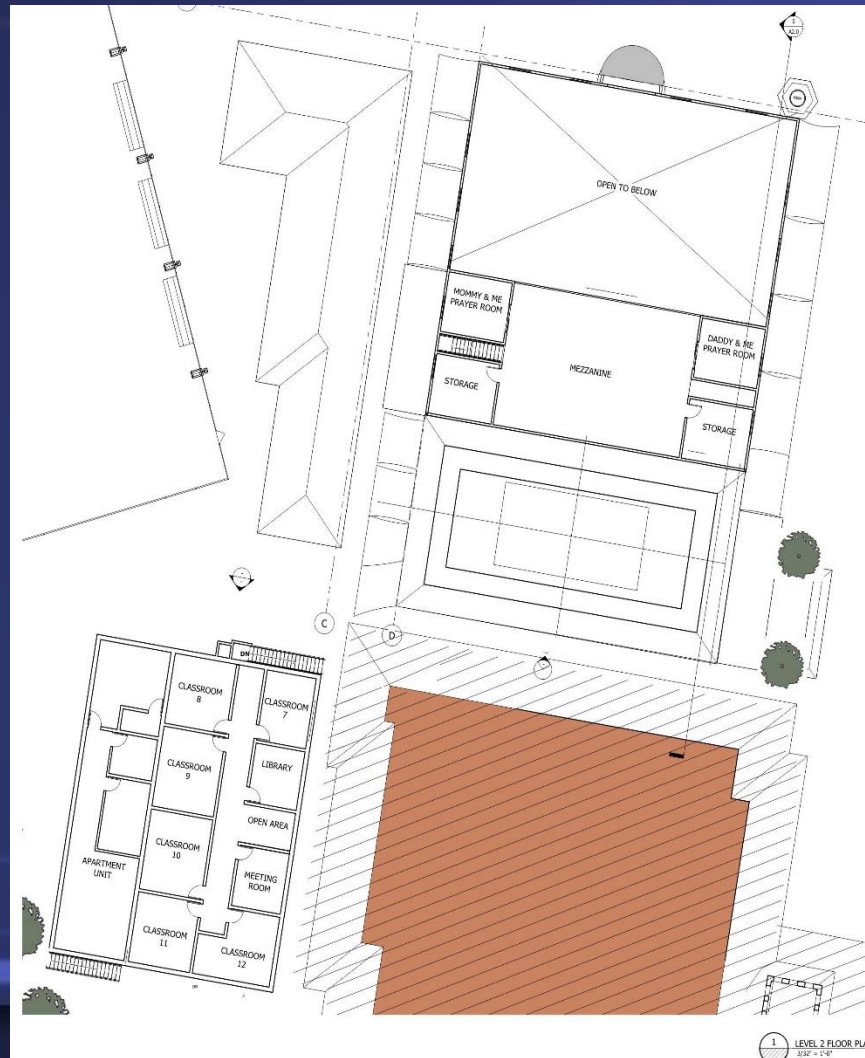
FOUNDATION

# Mezzanine Level



MUSLIM COMMUNITY CENTER  
OF GREATER SAN DIEGO  
UNITED IN FAITH

OPERATIONS



1 LEVEL 2 FLOOR PLAN  
3/8" = 1'-0"



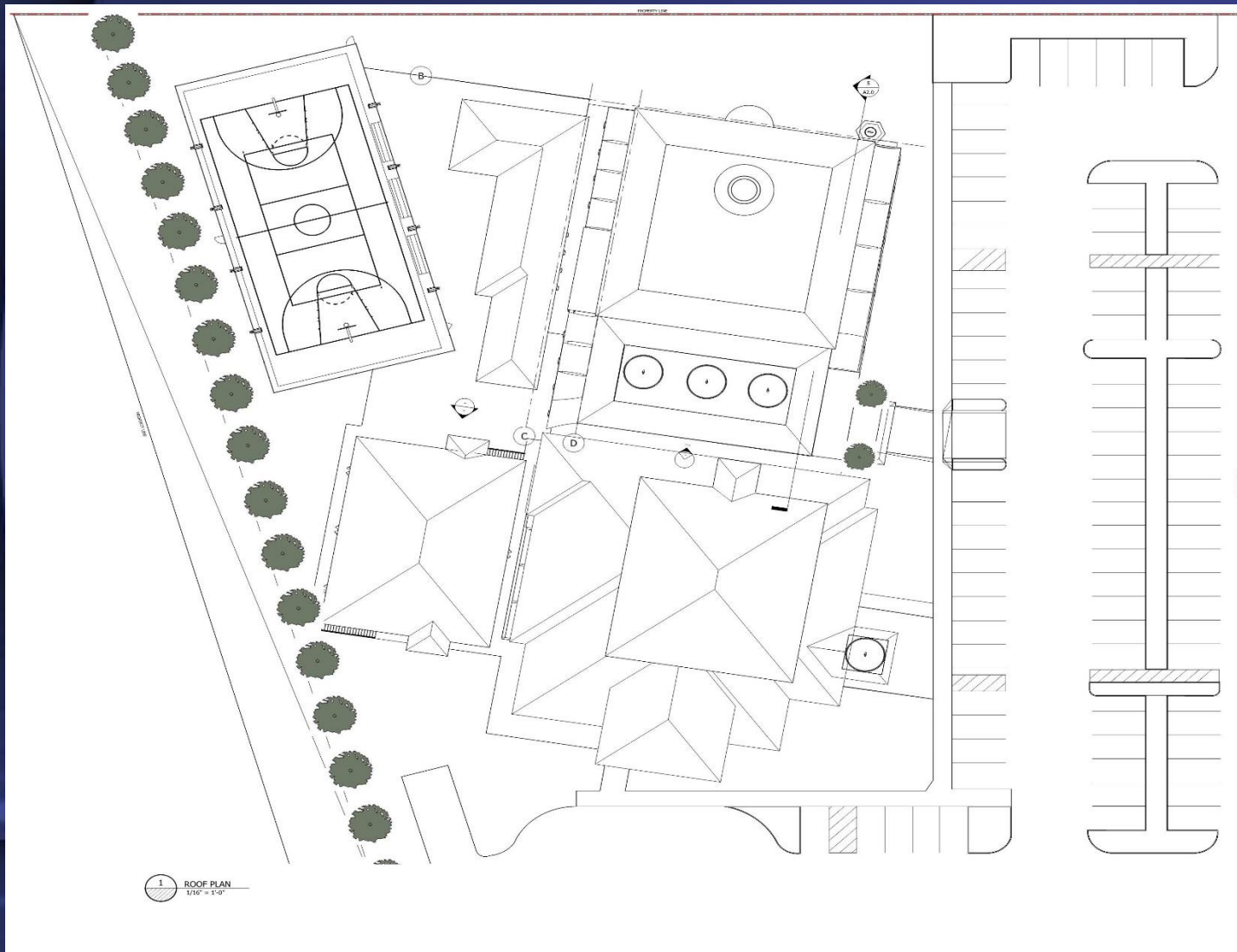
FOUNDATION



MUSLIM COMMUNITY CENTER  
OF GREATER SAN DIEGO  
UNITED IN FAITH

# Roof Plan

OPERATIONS





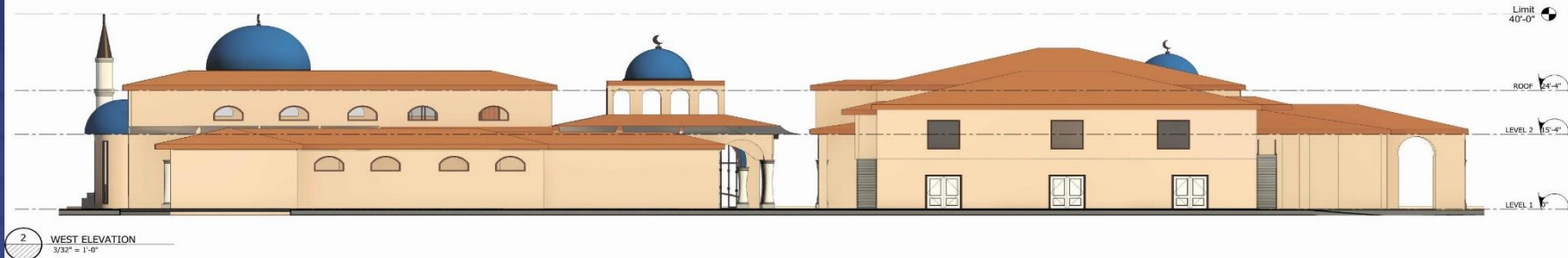
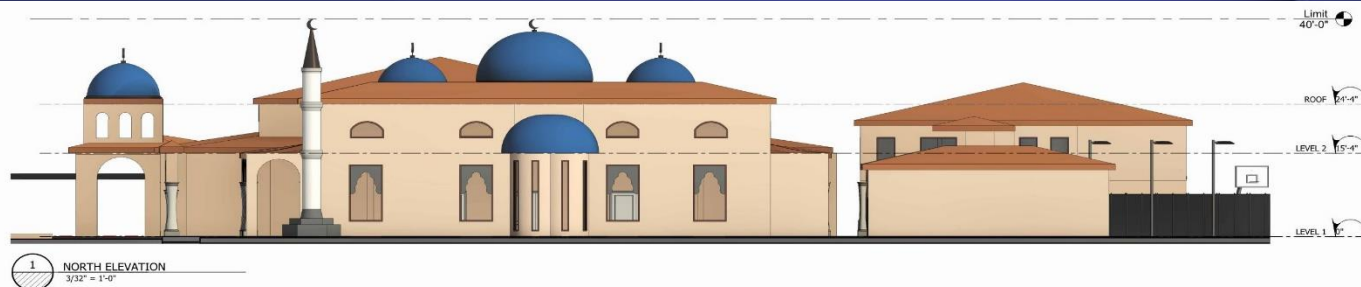
FOUNDATION

# Architecture Rendering



MUSLIM COMMUNITY CENTER  
OF GREATER SAN DIEGO  
UNITED IN FAITH

OPERATIONS





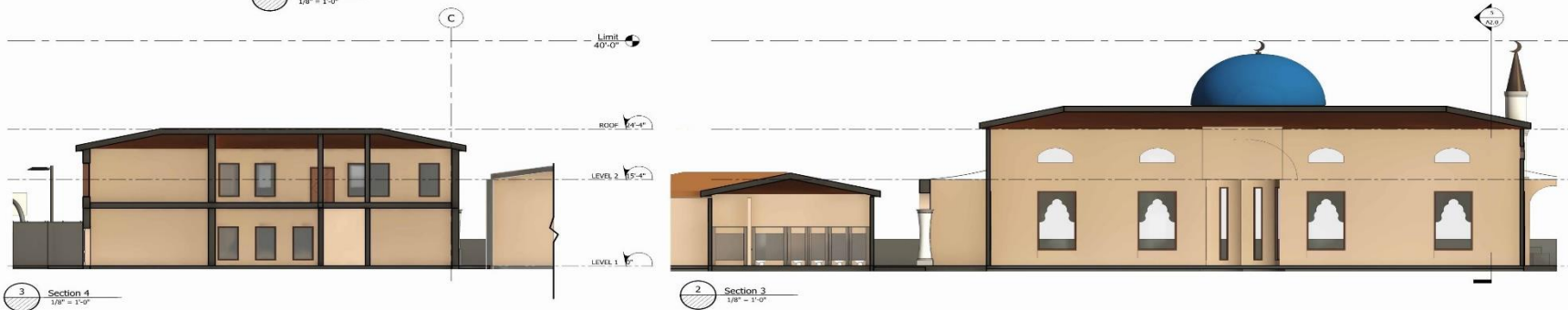


FOUNDATION

# East & West Elevations



MUSLIM COMMUNITY CENTER  
OF GREATER SAN DIEGO  
UNITED IN FAITH





FOUNDATION

# Rough Order of Magnitude Cost



MUSLIM COMMUNITY CENTER  
OF GREATER SAN DIEGO  
UNITED IN FAITH

STRUCTURE	AREA SF	\$/SF	EXTENSION
MOSQUE	7,510	\$400	\$3,004,000
COURTYARD	4,100	\$225	\$922,500
WADU / RESTROOM BLDG	700	\$150	\$105,000
SCHOOL/STORAGE	3,310	\$250	\$827,500
RESIDENCE	2,520	\$300	\$756,000
SUB-TOTAL			\$5,615,000
SOFT COST A/E 6%			\$336,900
<b>TOTAL</b>			<b>\$5,951,000</b>





FOUNDATION

# Conclusion



MUSLIM COMMUNITY CENTER  
OF GREATER SAN DIEGO  
UNITED IN FAITH

- ◆ This is a 2-to-4-year project.
- ◆ Based on the growth of MCC in the past 10 years, by the time Project is implemented, the need for additional capacity will become critical for Masjid & School
- ◆ This is a proactive strategic plan to address anticipated growth
- ◆ The sooner we get started the better off we are in addressing the growth in 2-4 years
- ◆ Funds raised will be managed & accounted for by Board approved Treasurer for both the Foundation and Operations.
- ◆ Everyone's donation will go towards one time \$10,000 Foundation Membership fee.



FOUNDATION

# Perspectives



MUSLIM COMMUNITY CENTER  
OF GREATER SAN DIEGO  
UNITED IN FAITH

## OPERATIONS



2 Perspective 2



Arch With Gate



Arch Without Gate